



Understanding and knowing the condition of your assets will help you make choices that are right for your community.

CAPTURE.

Compatibility is built into PIPELOGIX®. Use it with any CCTV camera system to record your survey findings. The footage readings are entered automatically into the survey forms and any PIPELOGIX® field can be captioned to the video for recording.

Import asset and survey information into PIPELOGIX® from a variety of formats including Infor/Neztek DEU, Cityworks, GBA, PACP, Sewer.dat and more. The result is more accurate information available to CCTV operators when they are creating surveys.

Since PIPELOGIX® has separate tables for assets in the database, creating multiple surveys for a pipe, lateral, or manhole is not a problem and allows the Engineer or Supervisor to see the survey history on a pipe. The operator can select the asset from the convenient "insert asset" tool button in the survey form. All of the stored data will be inserted into the survey form saving valuable entry time and limiting chance of entry error.

The lateral survey tool available in the mainline survey form was designed for use with a lateral launch camera system. The DVS append feature lets you create one digital file for your mainline and separate digital files for your lateral surveys with one equipment setup and pass through the pipe. If you use a push camera to inspect your lateral line, you can link the lateral survey form to your mainline survey form with our lateral linking tool.

Built-in features to assist the CCTV operator:

- CD/DVD burning function allows for easy sharing of survey data with customers or within your organization
- Counter preset function automatically inserts preset footage into survey
- File naming template to easily create custom names for videos, pictures or PDF reports
- Auto close of all continuous defects when survey is ended
- Easy insert of GPS coordinates compatible with the NMEA v2.1 standard

PIPELOGIX® Survey Options:

mainline, lateral, manhole, grout, sonar and inclinometer

"Not only has the customer service been exactly as you state on your website, the software integration with our clients has been fantastic, allowing us to offer the best product that we can offer! Thank you for doing a great job."

**Robert Lodge, Pipetek Infrastructure Services
Hamilton, ON Canada**

ANALYZE.

PIPELOGIX® stores asset details as well as survey data. Assets can be imported into PIPELOGIX® from a variety of sources including GIS programs. PIPELOGIX® Full Reporting License offers extensive tools to review and analyze survey data.

- Asset lists can be viewed and filtered so you can see all the surveys performed on an asset
- Copy and Paste projects or surveys between databases to easily create a master database from multiple trucks
- Filter on user criteria to find pipes or surveys for review
- Paragraph editor—create custom statements about recommendations or detailed descriptions of potential problems that the CCTV inspector can select and add to surveys without taking the time to compose or mistype statements
- Administration—Create password identities for users to limit program functionality

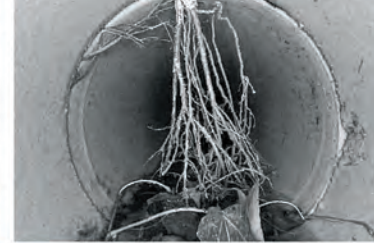


after-sales support that is THE best in the industry...

PIPELOGIX® has earned a reputation for having one of the best after-sales technical support departments and programs in the industry. Our products are developed in-house so when you call or email us for support, you'll be receiving solutions from those directly involved in the creation and on-going development of our products.

"Over the past eight years the PIPELOGIX® software and the support from the people at PipeLogix has been essential for our firm's success in providing custom solutions to meet our client's needs. Thank you for all of your help."

--Mark Hill, PE, Hirsch & Company



COLLABORATE.

Share inspection data seamlessly with major asset management and mapping programs.

- Export to industry standards.
- PACP, LACP and MACP.
- DVS and 360 Player to share video or 360 files, details, pictures and reports with clients or other departments.
- NDEU, an Infor Public Sector add-in exports Group Projects from Infor. The inspection is completed in PIPELOGIX® and the surveys, notes and pictures are sent back to Infor. Hansen V7 and V8 are both supported.
- A list of assets exported from GBA can be imported into flexidata. GBA Master Series utilizes the PACP export file to import surveys and movies into GBA.
- Azteca CityWorks interface to import workorders and create inspections on export.
- GIS link to view surveys from your ArcMap viewer.

Formats Supported

PACP, LACP, MACP
WRc SRM 2,3,4
WRc MSCC4
Infor Public Sector
Scream Mode
Cityworks
New Zealand
PIPELOGIX® standard

Our Partners & Certifications



Trademarks provided under license from ESRI

GET THE MOST FOR YOUR PIPE SURVEY TECHNOLOGY DOLLAR.

Different Licenses and Modules to Fit Your Specific Requirements and Budget

Lite—basic survey capabilities, import and export functions, image capture, survey reports; pipe graphic, tabular, and all evaluation reports.

Full—Advanced functions in addition to Lite capabilities include: asset editors, caption editor, paragraph editor, batch printing including saving as PDF, filter, and administration program.

DVS—Select to record in MPEG1, MPEG2, or Microsoft WMV formats. MPEG1 and WMV let you select the video quality and output size that meet your requirements. Recording features include Pause, Stop, and Append allowing you to stop when needed without having to restart your video. Archive files from your computer easily in one step.

360 Combined with a Lite License you can create a survey using the Panorama Camera System to create an IPF file. Combined with a Full License, add the ability to do a virtual pan and tilt as well as zoom to the defect. Log observations into the survey form; footage and the clock reference are automatically entered.

Manhole—You can choose either ASCE mode or MACP to record your survey. Image capture is included. Use it with the 360 Module and the Panorama SI camera to do a manhole virtual inspection back at the office.

GIS—Import from shape files or geodatabases to display maps in the survey form. Use the tool bar in ArcMap to search the flexidata database and display movies. Export survey conditions to a shape file or feature class in a geodatabase.

Inclinometer—record the slope of the pipe using Pearpoint, Aries, RS Technical or IBAK CCTV systems. Envirosight and Rausch will be added soon.



Live on-line demonstrations of the complete suite of PIPELOGIX® data collection and analysis solutions are available upon request.

PO Box 14014, Palm Desert CA 92255
866.299.3150 · 760.779.1700 · (f) 760.406.6023 · www.pipelogix.com